



BEVERAGE

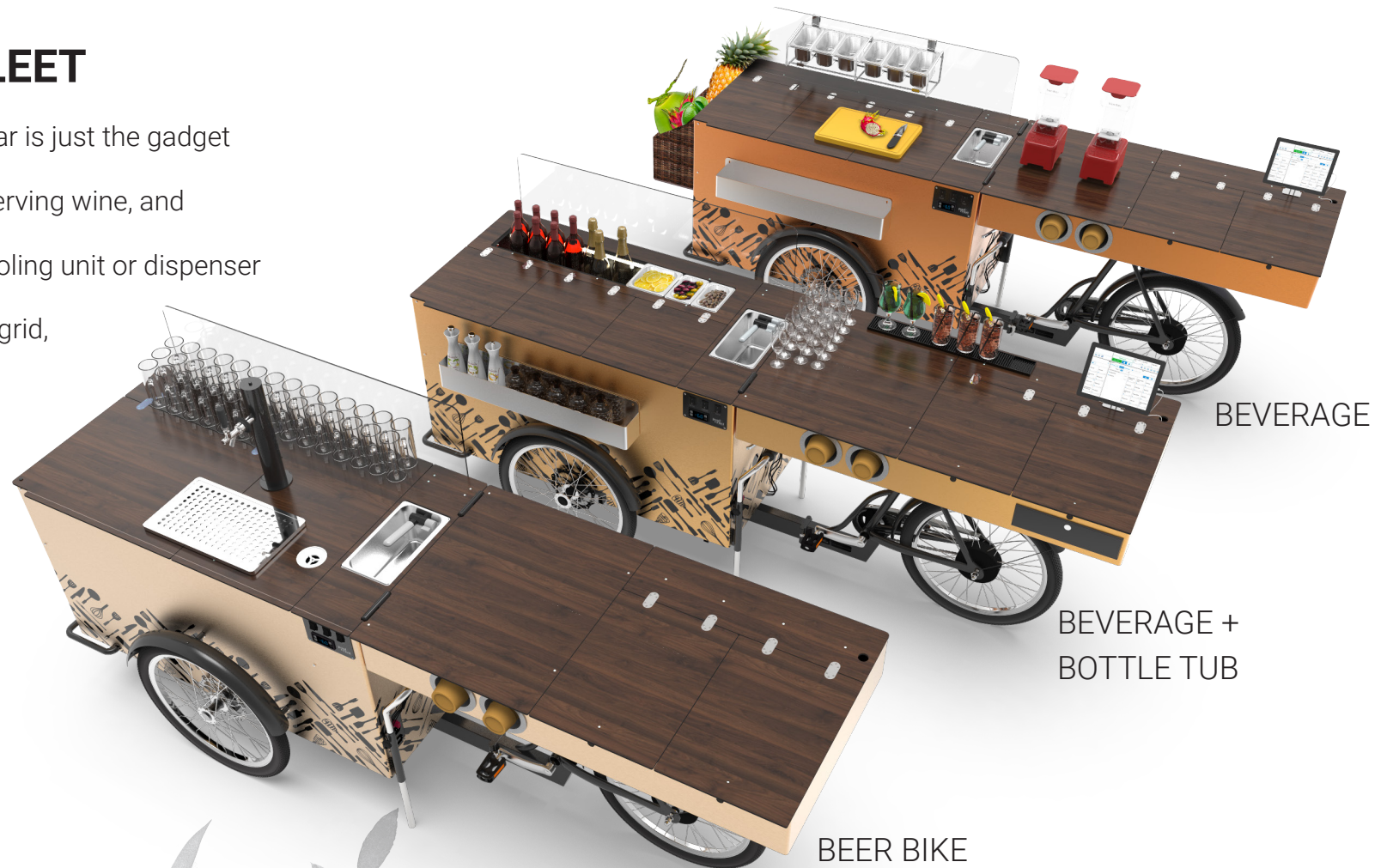
MODELS 2023/2024

**paul &
ernst**
street food solutions

BEVERAGE BIKE **FLEET**

Our fully equipped and mobile bar is just the gadget you need for mixing cocktails, serving wine, and pouring beer. Our battery-run cooling unit or dispenser system allows you to go off the grid, giving you the flexibility to turn any location into an outdoor café or a beer garden.

CHOOSE THE PERFECT MODEL
CUSTOMIZED TO YOUR NEEDS!

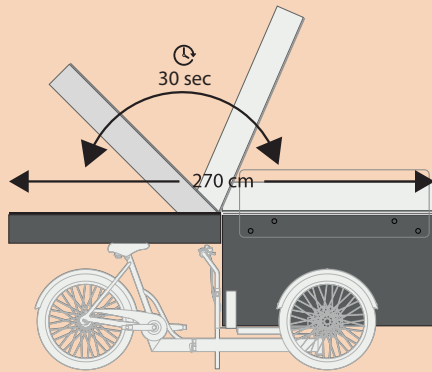


BEVERAGE

BEVERAGE +
BOTTLE TUB

BEER BIKE





SETUP IN 30 SECONDS

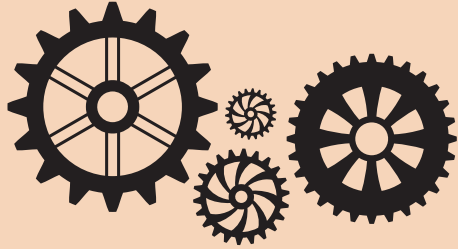
In just a few simple steps you're good to go:

- ARRIVE
- OPEN
- SELL

IMPRESSIONS **BEVERAGE BIKE**

YOUR BEVERAGE BIKE – **INDIVIDUALLY** CUSTOMIZED TO YOUR NEEDS...





CHOOSE YOUR PERFECT BEVERAGE BIKE

Our professional and customizable equipment options allow you to configure the perfect bike for selling beverages of all kinds.

YOUR **INDIVIDUAL** BEVERAGE BIKE



- 270 cm work surface
- 240 L cooling unit
- Cooled bottle tub
- Up to 10 h of self-sufficient cooling
- E-cargo bike
- Sink with Flojet water pump
- 2 x 14 L fresh/waste water tank
- Overnight charging

from **€ 11,930** excl. BATTERY PACK

BEVERAGE BIKE **COCKTAIL**

- 2 x 30 L of beer
- Glass rinser
- 270 cm work surface
- Easy-to-install tap
- Up to 10 h of self-sufficient cooling
- E-cargo bike
- Sink with Flojet water pump
- Overnight charging

from **€ 16,740** excl. BATTERY PACK

BEVERAGE BIKE **BEER**

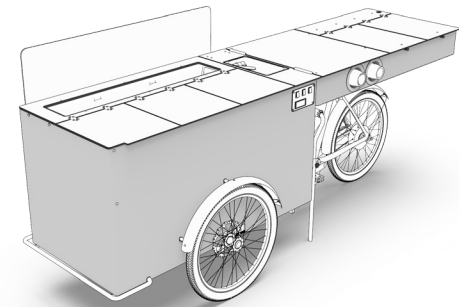
All prices excluding VAT





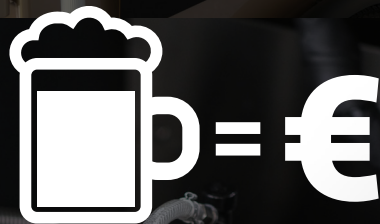
BEVERAGE BIKE **COCKTAIL**

P&E BODY: Cooled bottle tub made of stainless steel with water drain; cooling unit; GN containers (1/6 and 1/9 dimensions) and various special consoles (for cakes, sandwiches & more); e-bike with 500 W engine; battery pack large 1.8 kWh – self-sufficient working for up to 10 hours; paint in color of choice and optional branding packages



240 LITER COOLING UNIT, 8 TO 10 H,
0°C TO +18°C DIGITAL DISPLAY

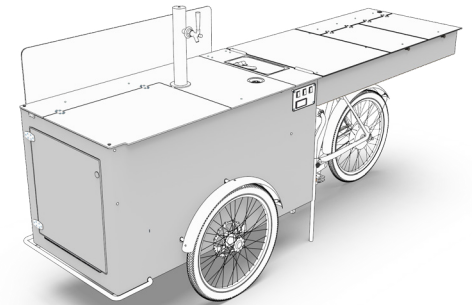




**2 GLASSES of 0.3 L
PER MINUTE!**

BEVERAGE BIKE **BEER**

P&E BODY: Beer tap: standard tap made of stainless steel, beer pipe with tap head cap (available in flat or basket version) and CO₂ hose; integrated glass rinser; under-counter cooling unit (2-circuit flow-through cooler with display in the body); pressure reducer; special mounting system for 2 x 30 liter kegs (maximum capacity); cleaning kit; Note: tap including dispenser and drip tray completely removable – simply loosen screw and stow in body before closing. Not included: kegs, CO₂ cylinder; e-bike with 500 W engine; battery pack Large 1.8 kWh – self-sufficient for up to 10 hours; paint in color of choice and optional branding packages



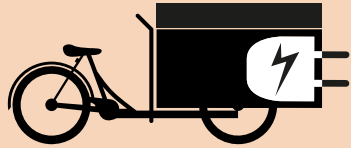
CONNECTIVITY SET
SOCKET, 2 X USB, ROUTER



GLASS RINSER
AND DRIP TRAY

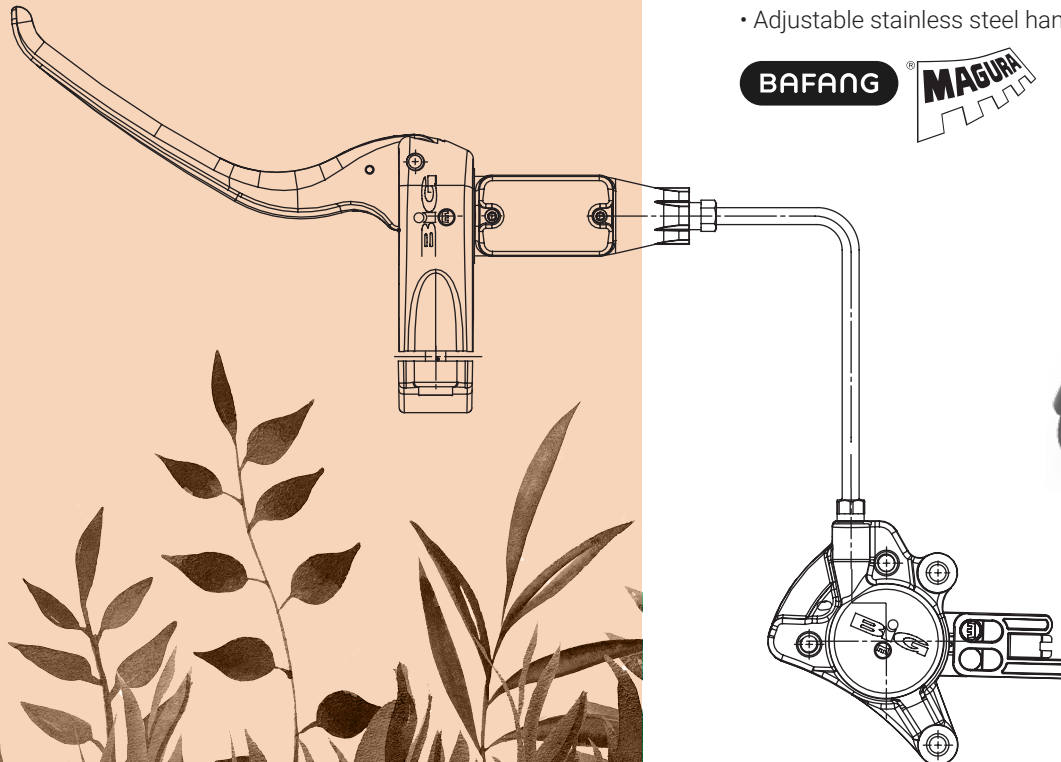
"ONE TOUCH"
CASH DRAWER





E-CARGO BIKE

Our e-cargo bikes comply with **EU Pedelec Guidelines** and always come with **high-end equipment**. With **Magura's Big Twin**, our bikes are equipped with the most secure bike brakes on the market. The **new Bafang E-Cargo mid-mounted engine** is the most robust and reliable of its kind.



E-CARGO BIKE – THE BASIS FOR EVERYTHING

Specifically designed by us for the street food market, our e-cargo bike is unique. The battery supplies the cooling unit, water pump and bike engine with low power for up to 10 hours. The bike base provides space for all electronics as well as different battery sizes of up to 1.8 kWh.

The lithium ion battery with integrated battery management system allows for long ranges, making our Street Food Bike the **superstar of sustainability!**

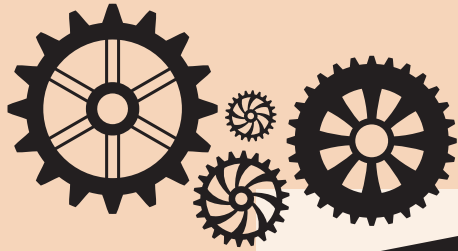
E-CARGO-BIKE by **paul&ernst**

- Powder-coated steel frame
- Mid-mounted 500 W Bafang engine
- Shimano Deore gear shift
- Magura Big Twin hydraulic brake
- Adjustable stainless steel handlebar



- BATTERY PACKS:**
- S** AKKU SIZE • Small 0.4 kWh
 - M** AKKU SIZE • Medium 1.0 kWh
 - L** AKKU SIZE • Large 1.8 kWh





IN DETAIL: **INSIDE THE BEVERAGE BIKES**



- Stainless steel sink, GN 1/3
- 24 V Flojet water pump
- 2 x 14 L fresh/waste water tank

PUMP AND WATER SUPPLY



- Cooled bottle tub
- GN rack 98 x 18 cm
- 240 L cooling unit
- Up to 10 h of self-sufficient cooling
- R290 ECO-FRIENDLY cooling agent
- 0°C to +18°C variable digital display



BEVERAGE BIKE COCKTAIL COOLING SYSTEM



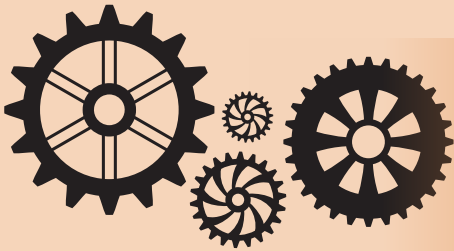
- Dispenser: standard tap made of stainless steel
- Beer pipe (tap head cap, CO₂ hose)
- Integrated glass rinser
- Under-counter cooling unit
- Pressure reducer
- Mounting system, max. 2 x 30 liter kegs
- Tap including dispenser and drip tray, fully removeable



BEVERAGE BIKE BEER DISPENSING TECHNOLOGY



1001 POSSIBILITIES **FOR YOUR BUSINESS**



SMART FEATURES

1001 possibilities to turn your bike into your very own mobile point of sale. Looking to expand your offer and sell ice cream, pastries, snacks, or drinks?

Have a paul&ernst Expert assist you:

We're happy to help your wishes come true.

Customize your bike for professional, efficient working!



**INDIVIDUAL
BRANDING**
PAINT & LOGOS



**PROFESSIONAL
EQUIPMENT**
FOR EVERY NEED

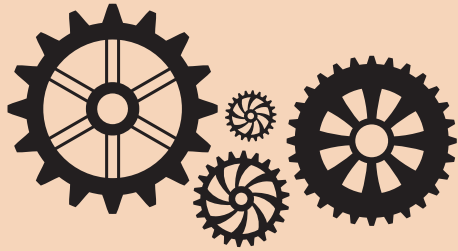


**SELF-SUFFICIENT
COOLING**
UP TO 10 H



**POS INFRA-
STRUCTURE**
24V/36V





BE FLEXIBLE

Pair your bike with a trailer of your choice and increase your sales.

Our trailers are universal and attach quickly to one of our bikes or to your regular bike with a quick fastener.

The trailer coupling can be mounted to any bike and is included in the price.

OUR ICE CREAM TRAILERS



- 114 cm work surface
- 60 L of ice cream
- 12 GN ice cream containers, 5 L ea.
- 4 flavors on display
- Self-sufficient for up to 10 h
- -18°C to +6°C digital display
- 24 V Flojet water pump
- 2 x 14 L fresh/waste water tank
- Overnight charging

from **€ 11,400** excl. BATTERY PACK

ICE CREAM SQUARE
TRAILER

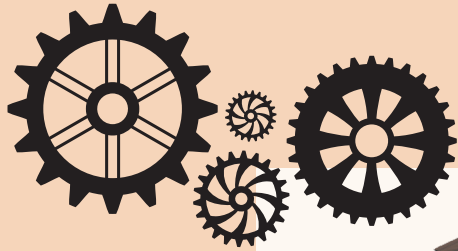


- 114 cm work surface
- 70 L of ice cream
- 10 carapine, 7 L ea.
- 6 flavors
- Self-sufficient for up to 10 h
- -18°C to +6 °C digital display
- 24 V Flojet water pump
- 2 x 14 L fresh/waste water tank
- Overnight charging

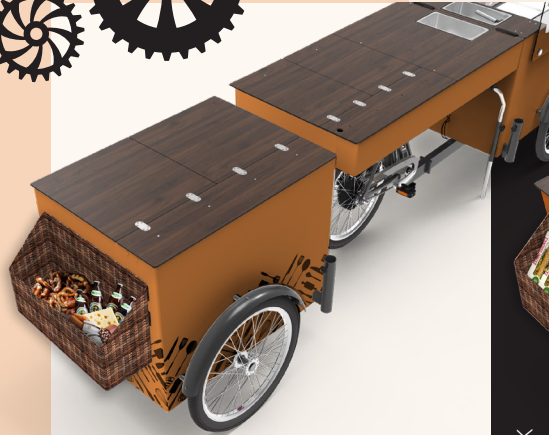
from **€ 10,300** excl. BATTERY PACK

ICE CREAM POZZETTI
TRAILER





EXPAND YOUR OFFER



- 94 cm work surface
- Cooling units: without / 170 L
- Up to 10 h of self-sufficient cooling
- Trailer drawbar included
- Branding options / add-ons
- Overnight charging

from **€ 4,680** excl. BATTERY PACK

**BASIC TRAILER
SMALL**



- 114 cm work surface
- Cooling units: without / 170 L
- Up to 10 h of self-sufficient cooling
- Trailer drawbar included
- 24 V Flojet water pump
- 2 x 14 L fresh/waste water tank
- Branding options / add-ons
- Overnight charging

from **€ 8,180** excl. BATTERY PACK

**BASIC TRAILER
STANDARD**

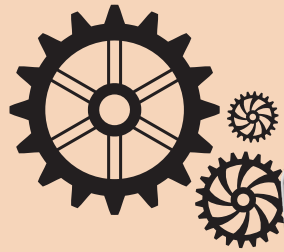


- 114 cm work surface with room for one cooking appliance
- Without cooling unit
- Trailer drawbar included
- 24 V Flojet water pump
- 2 x 14 L fresh/waste water tank
- Branding options and add-ons
- Overnight charging

from **€ 8,080** excl. BATTERY PACK

**COOKING TRAILER
STANDARD**





- Versatile
- Up to 10 h of self-sufficient cooling
- Total volume of 270 L
- 0°C to +18°C digital display
- Sink with 24V Flojet water pump
- 2 x 14 L fresh/waste water tank
- Overnight charging
- Canopy with individual branding

from € 9,550 excl. BATTERY PACK

BASIC PUSHCART
BIG



- 80 L of ice cream
- 6 flavors on display
- -18°C to +6°C digital display
- Up to 10 h of self-sufficient cooling
- Sink with 24V Flojet water pump
- Scoop shower
- 2 x 14 L fresh/waste water tank
- Overnight charging
- Canopy with individual branding

from € 13,320 excl. BATTERY PACK

PUSHCART SQUARE
BIG



- 98 liters of ice cream
- 8 flavors + 6 back-up carapine
- -18°C to +6°C digital display
- Up to 10 h of self-sufficient cooling
- Sink with 24V Flojet water pump
- Scoop shower
- 2 x 14 L fresh/waste water tank
- Overnight charging
- Canopy with individual branding

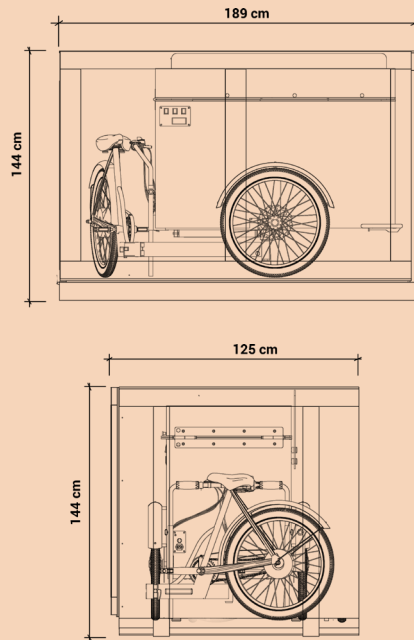
from € 12,120 excl. BATTERY PACK

PUSHCART POZZETTI
BIG

OUR NEW PUSHCARTS

Looking for an innovative solution for a mobile point of sale? Our **paul&ernst Pushcarts** are **just the thing for you!** They are more compact and economical than the street food bikes: extremely mobile, easy to handle, and flexible thanks to the integrated battery. The Pushcarts are 100% customizable and can be used indoors and outdoors. **Switching locations within minutes has never been easier!**





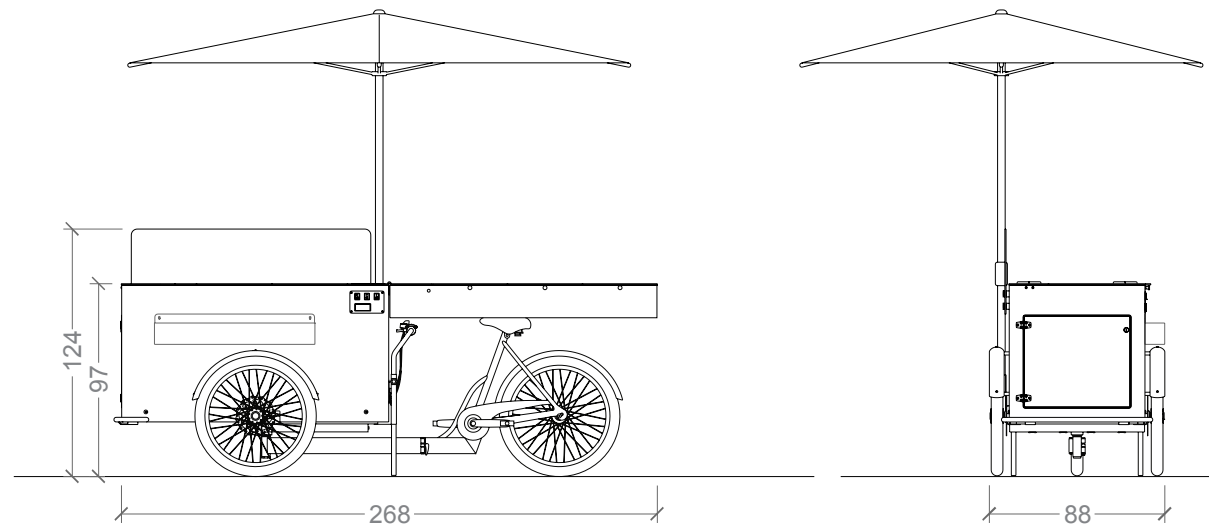
BIKE TRANSPORT BOX

Our **P&E transport boxes** are regionally produced, made of solid wood and certified for international shipping (IPPC standard).

Our transport boxes are CO₂ neutral.

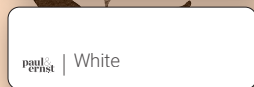
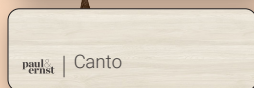
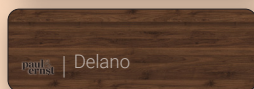
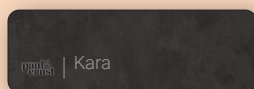
BEVERAGE BIKE DIMENSIONS

MAKING THE MOST OF EVERY INCH! Our e-cargo bike is the only one in the world that offers a 270 cm work surface and, when closed, still fits through standard door frames (W 88 cm) and into freight elevators. We thought out every element of our ergonomically designed bike down to the very last detail to make your daily workflow and even world-wide shipping a breeze.





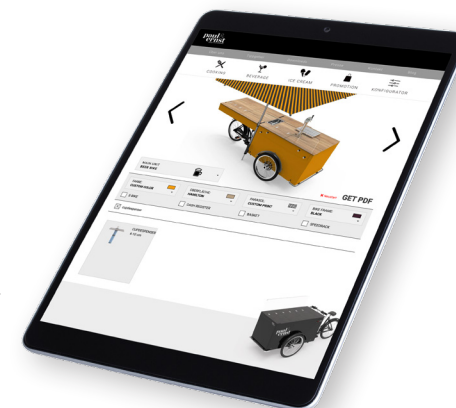
P&E COLORS + SURFACES



ONLINE CONFIGURATOR
www.paulandernst.com/configurator

ONLINE CONFIGURATOR

You can easily create **YOUR INDIVIDUAL STREET FOOD BIKE** using our **online configurator**. Select from a wide array of work surfaces, add-ons, professional equipment and numerous branding possibilities to design your bike according to your concept and needs. Even the parasol may be customized with colors and logos of your choice. **Make your dream come true and watch your business thrive.**



DESIGN TEMPLATES

www.paulundernst.com/downloads

BRANDING PACKAGES



BRANDING MEDIUM

Color of choice + 3 small or 2 big logos



BRANDING LARGE

Color of choice + unlimited logos/illustrations



BRANDING 360°

Full wrap 120 DPI IMAGES, entire bike without paint

Of course, you may also have your bike painted
in your DESIRED COLOR ONLY.

YOUR BIKE. YOUR BRAND. YOUR MOMENT!

We offer a range of different branding packages to cover all your needs. Personalize your bike by including parasols and beach flags. **Do you have a logo**, but don't know your way around design programs? Not a problem! We also offer various graphic support packages complementing our branding packages. Your **paul&ernst** Expert will gladly help you choose!



PRINTING PROOF - BIKE DESIGN APPROVAL / ORIGINALSIZE
GUT ZUM DRUCK - BIKE-DESIGN-FREIGABE / ORIGINALGRÖSSE

BIKE TYPE: **BEVERAGE BIKE**
BIKE COLOR: **RAL 2000**
BRANDING LARGE: **LOGOS ALL OVER**

ALL CORNERS / EDGES ARE ROUNDED
ALLE ECKEN / KANTEN SIND ABGERUNDET

DETAILS IN THE DRAWING AREA "PRINT SPECIFICATIONS".
DETAILS IN DER ZEICHENFLÄCHE „DRUCKSPEZIFIKATIONEN“.

NOTE! LOGOS/LETTERINGS ARE DISPLAYED UPSIDE DOWN IN LID CLOSED VIEW.
PLEASE PLACE THEM UPSIDE DOWN IN OUR LID CLOSED VIEW.
WICHTIG! SCHRIFTEN/LOGOS STEHEN IM ZUGEKLAPPTEN MODUS AUF DEM KOPF.
BITTE DIESE ALSO UM 180° GEDEHRT AUF DEM LID PLATZIEREN.



LID TOP SURFACE

(LID CLOSED VIEW · ZUGEKLAPPTA ANSICHT)

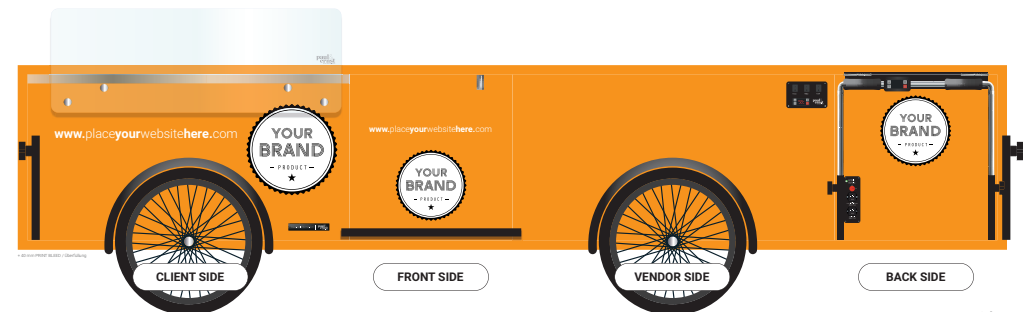


LID CLIENT SIDE

LID FRONT SIDE

LID VENDOR SIDE

LID BACK SIDE



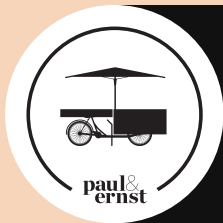
CLIENT SIDE

FRONT SIDE

VENDOR SIDE

BACK SIDE





CONTACT

paul&ernst GmbH

Vienna: Linke Wienzeile 176, 1060 Vienna, Austria

Tyrol: Weisstraße 9, 6112 Wattens, Austria

Bikeline: +43 1 36 166 10

E-Mail: office@paulandernst.com

www.paulandernst.com

